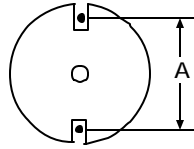
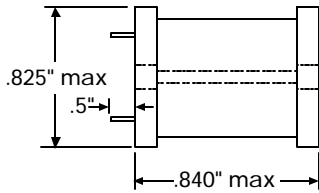
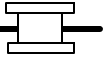


# Power Line Chokes DR2



## TYPICAL APPLICATIONS

- Filters
- Power Supplies
- RFI Suppression
- Power Amplifiers
- Switching Regulators
- SCR and Triac Controls
- Speaker and Crossover Networks

## GENERAL CHARACTERISTICS

DR2 Power Line Chokes are available in Inductances ranging from 1 to 2200  $\mu\text{H}$  with Saturation Currents ranging from 2 to 108 amps DC. High saturation material makes these chokes ideal for applications needing both high-current values and small size. Supplied in bulk only.

### Notes:

- (1) Saturation current lowers inductance 5%.
- (2) Leads are tinned to within 1/16 in. of body.
- (3) Coils are finished with UL-VW -1 rated sleeving.

PART NUMBER	INDUCTANCE ( $\mu\text{H} \pm 10\%$ )	DC RESISTANCE OHMS MAXIMUM (W)	CURRENT SATURATING AMPS DC (1)	WIRE DIAMETER	DIMENSION (A)
DR2-1R0K	1.0	.003	108.0	0.071	.620
DR2-1R2K	1.2	.003	108.0	0.071	.620
DR2-1R5K	1.5	.003	83.0	0.071	.620
DR2-1R8K	1.8	.003	68.0	0.067	.620
DR2-2R2K	2.2	.004	68.0	0.067	.620
DR2-2R7K	2.7	.005	58.0	0.067	.620
DR2-3R3K	3.3	.005	58.0	0.067	.620
DR2-3R9K	3.9	.005	50.0	0.055	.620
DR2-4R7K	4.7	.005	50.0	0.063	.620
DR2-5R6K	5.6	.006	44.0	0.059	.620
DR2-6R8K	6.8	.007	39.0	0.063	.620
DR2-8R2K	8.2	.007	36.0	0.055	.620
DR2-100K	10	.009	30.0	0.059	.620
DR2-120K	12	.009	27.0	0.055	.620
DR2-150K	15	.013	25.0	0.051	.625
DR2-180K	18	.018	22.0	0.051	.630
DR2-220K	22	.019	21.0	0.051	.630
DR2-270K	27	.026	20.5	0.047	.546
DR2-330K	33	.029	18.6	0.047	.546
DR2-390K	39	.030	17.0	0.039	.594
DR2-470K	47	.035	15.1	0.039	.625
DR2-560K	56	.039	13.6	0.039	.625
DR2-680K	68	.053	12.7	0.039	.656
DR2-820K	82	.060	11.3	0.039	.656
DR2-101K	100	.080	10.4	0.035	.593
DR2-121K	120	.090	9.4	0.031	.593
DR2-151K	150	.098	8.6	0.031	.593
DR2-181K	180	.110	7.8	0.031	.671
DR2-221K	220	.150	7.0	0.028	.593
DR2-271K	270	.213	6.3	0.028	.562
DR2-331K	330	.305	5.2	0.028	.590
DR2-391K	390	.320	4.9	0.026	.590
DR2-471K	470	.355	4.5	0.026	.590
DR2-561K	560	.388	4.1	0.024	.590
DR2-681K	680	.430	3.7	0.024	.590
DR2-821K	820	.590	3.4	0.022	.590
DR2-102K	1000	.818	3.1	0.020	.590
DR2-122K	1200	1.410	2.7	0.018	.590
DR2-152K	1500	1.260	2.4	0.018	.590
DR2-182K	1800	1.390	2.2	0.016	.590
DR2-222K	2200	1.540	2.0	0.016	.590