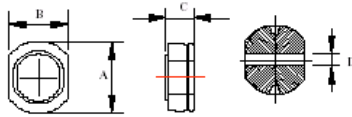


# LC75S Series Shielded Inductors



TYPE	A	B	C	D
LC75S	7.8±0.4	7.0±0.4	4.5±0.5	2.1

## LC75S Series Shielded Inductors

Part Number	Inductance (uhy)	Test Freq.	SRF Mhz min.	DCR Ohms max.	Rated Current DC amps max.
LC75S-100M	10	2.50Mhz	29	0.070	1.64
LC75S-120M	12	2.50Mhz	26	0.080	1.50
LC75S-150M	15	2.50Mhz	21	0.090	1.34
LC75S-180M	18	2.50Mhz	20	0.110	1.22
LC75S-220M	22	2.50Mhz	19	0.120	1.10
LC75S-270M	27	2.50Mhz	17	0.170	1.00
LC75S-330M	33	2.50Mhz	16	0.190	0.90
LC75S-390M	39	2.50Mhz	15	0.210	0.83
LC75S-470M	47	2.50Mhz	12	0.240	0.75
LC75S-560M	56	2.50Mhz	11	0.320	0.69
LC75S-680M	68	2.50Mhz	10	0.370	0.63
LC75S-820M	82	2.50Mhz	10	0.400	0.57
LC75S-101M	100	1.0Khz	9	0.540	0.52
LC75S-121M	120	1.0Khz	7.5	0.620	0.47
LC75S-151M	150	1.0Khz	7	0.860	0.42
LC75S-181M	180	1.0Khz	6.5	0.970	0.38
LC75S-221M	220	1.0Khz	5	1.310	0.35
LC75S-271M	270	1.0Khz	4.5	1.460	0.31

### Notes.

1. Current rating based on 25% decrease from initial inductance at 0ADC.
2. Operating temp range: -20 Deg. C to + 80 Deg. C.
3. Temp rise to be 40 Deg C max. at rated current.
4. 10% inductance tolerance also available. Replace "M" with "K" in part number.
5. All Materials meet RoHS specifications.